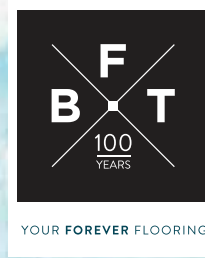


ALFRESCO TERRAZZO

HANDCRAFTED & CREATED FOR OUTDOORS BY
BHARAT FLOORINGS AND TILES





ABOUT BHARAT FLOORINGS AND TILES

A place where new design meets traditional cement tiles.

The Bharat Floorings and Tiles, an ISO 9001:2015 Certified legacy brand is the leader in artisanal cement floorings in India since 1922. For a hundred years BFT's wide range of patterned and terrazzo tiles and elegant marble has graced iconic spaces and ruled the hearts of the who's who of Indian Society. Architectural marvels such as the Umaid Bhavan Palace to modern day celebrity homes demonstrate the foreverness of the brand.

Today, in a world that prizes mechanically produced floorings, the company still continues to skillfully blend craftsmanship with industrial scale to bring together unique flooring solutions that are long-lasting and beautiful. Our products are custom designed to create stunning floors and walls to suit eclectic tastes. Our patterned encaustic tiles have been much acclaimed by architects, and interior designers, and have received awards from UNESCO. We help designers to envision their dream floor and convert it into reality. The timeless elegance and durability of these tiles make them works of art. At BFT, we do all India projects and also export tiles to the USA, England, Sri Lanka, Mauritius, Dubai, etc.

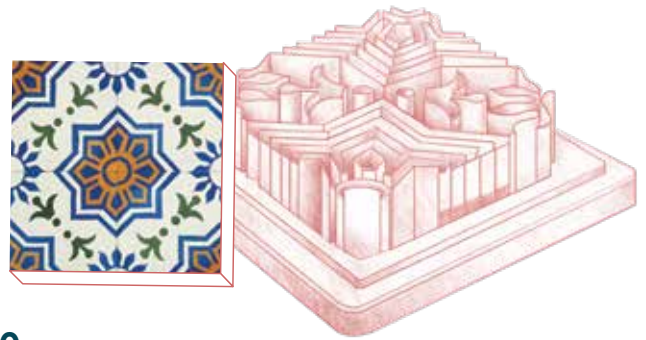
ALFRESCO TERRAZZO

Enhance your outdoor spaces with our versatile and durable Alfresco Terrazzo tiles. Perfect for pathways, driveways, walkways, patios, poolside areas, and more, these tiles are designed for environments where water seepage is acceptable. With a rough texture that minimizes water stains and seepage concerns, Alfresco Terrazzo is ideal for areas exposed to the elements. Our Alfresco Terrazzo tiles are available in a variety of colors and sizes, offering endless design possibilities to create a truly customized outdoor space.

Whether you're looking to craft a sleek and modern outdoor oasis or a rustic, natural retreat, Alfresco Terrazzo tiles are the perfect choice. Their adaptability and aesthetic appeal ensure that your next outdoor design project will reflect your unique style and personality while providing a durable and functional surface. Though not waterproof, these tiles allow water to seep through to the layer below, making them suitable for any outdoor installation where moisture is a factor.

Available in a variety of colours and sizes suitable for outdoors, we offer endless design possibilities, allowing you to create a truly customized outdoor space that reflects your unique style and personality. Whether you're looking to create a sleek and modern outdoor oasis or a rustic and natural retreat, Outdoor terrazzo tiles are the perfect choice for your next outdoor design project.

THE JOURNEY OF A 100 YEARS



1922



Pheroze and Rustom Sidhwa started a tile manufacturing unit called The Bharat Flooring Tile Company



1935



Bharats' floors jazz up Art Deco precincts across Mumbai

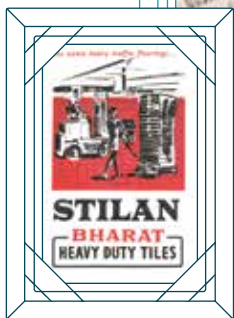
1940

Grindwell Abrasives is born



1980

Bharat's Stilan™ tiles in the Bombay Dyeing, Century and Khatau Makanji Mills. Bharat wins 7 contracts with the Tata group.



2005

Heritage Conservation: BFT restores the Salar Jung Museum, Hyderabad and then the Bhau Daji Lad Museum, Mumbai which won a UNESCO Award for Cultural heritage conservation in 2005



2013

Winning the UNESCO award for the Royal Bombay Yacht Club

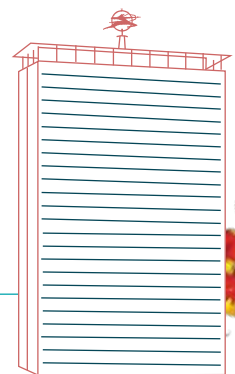


2022

Completes 100 Years and gears up for the next one with an assortment of home decor, called the BFT Home.

1930

Bharat Tiles found their way into the Bombay Central Railway station, Royal Mint, Universities, and even the Governors' houses

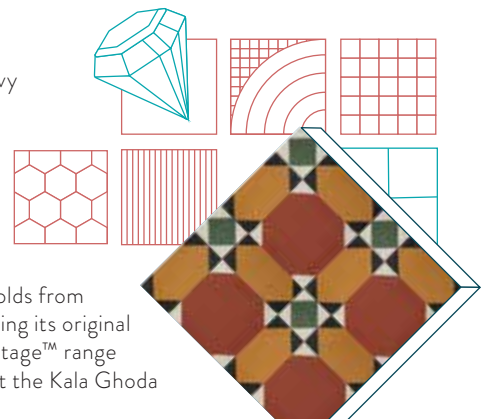


1937

Bharat's Indian and Italian Marbles in swadeshi banks and insurance companies

1960

The debut of Stilan™ heavy duty tile for Industries



1999

Dusting off its original molds from the 1920s and rediscovering its original catalogues, Bharat's Heritage™ range was relaunched in 1999 at the Kala Ghoda Arts Festival, Mumbai.

2010

Reviving the craft of in-situ floors



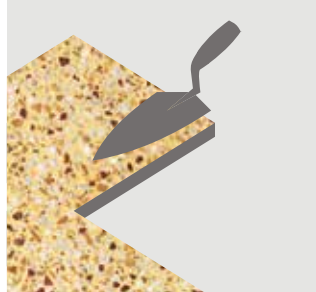
2014 onwards

BFT pioneers collaborations with top design talent for fresh tile collections spanning the next decade



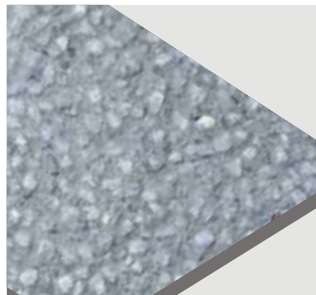
And the journey continues...

THE ADVANTAGES



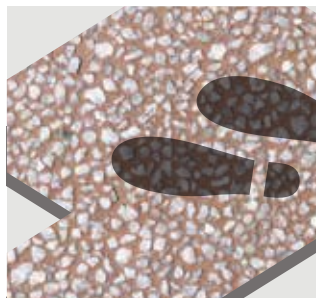
READY TO INSTALL AND LOW MAINTENANCE

Like other terrazzo tiles, our Alfresco Terrazzo tiles are relatively easy to install and maintain.



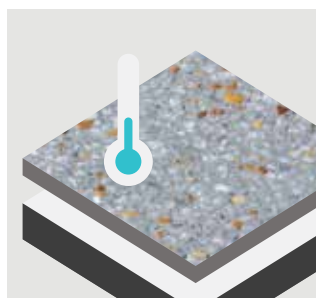
NON-SLIP SURFACE

Alfresco Terrazzo by BFT has a rough texture on the surface, which provides excellent slip resistance, making these tiles ideal for outdoor areas prone to wet conditions.



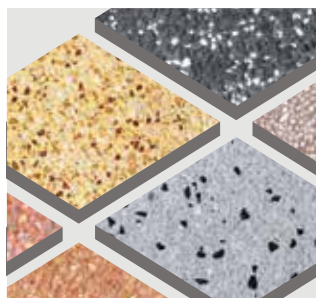
DURABILITY

Terrazzo tiles are known for their durability and longevity. Our leather finish process further enhances this by creating a tougher surface that can withstand heavy foot traffic and outdoor elements.



COOLER SURFACE

Just like our indoor cement tiles, our textured surfaced Alfresco Terrazzo tiles can help to reduce heat retention, making them more comfortable to walk on barefoot in hot weather.



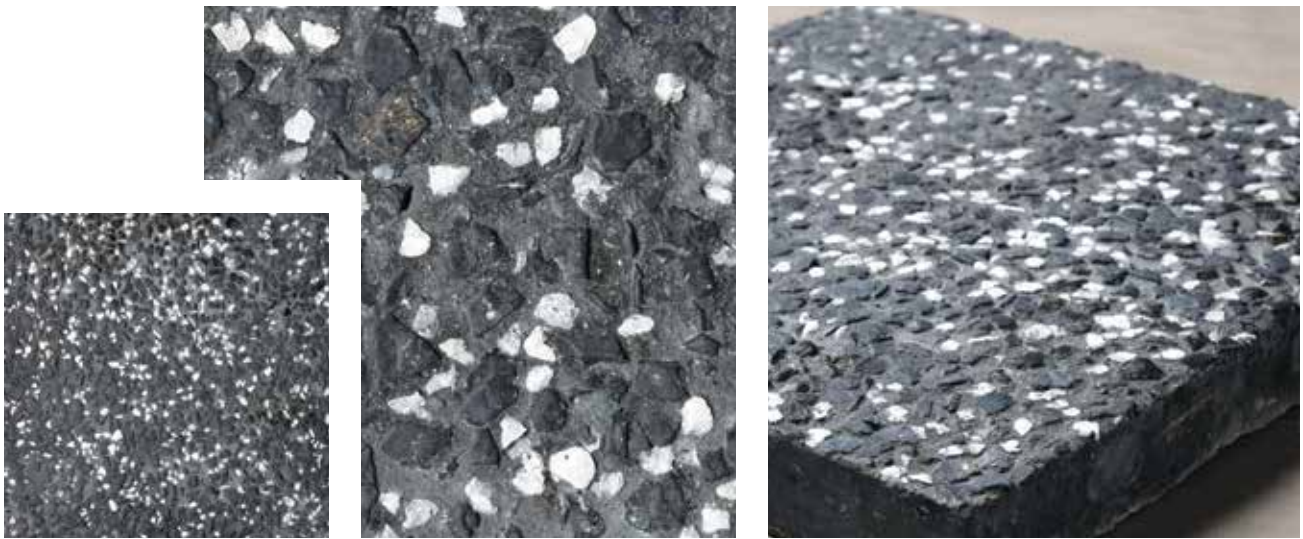
VERSATILITY

Our Alfresco Terrazzo tiles are available in a wide range of colours and can be customized to suit specific design requirements upon consultation with our in-house team, allowing for creative freedom in outdoor design projects.

ALFRESCO TERRAZZO FOR THE OUTDOORS, BY BFT

Alfresco Terrazzo can be used in outdoors, pathways, driveways, walkway, patios, pool side, and more! The product can be installed in areas where the client is okay with water seeping into the tile. Since this is a rough textured tile, water seepage or water stains are not a matter of concern as it is made for such purposes only. Our Alfresco Terrazzo tiles are not waterproof which means water will seep into the tiles and to the layer below it. But you can use it anywhere near the pool, outdoors, etc.

Alfresco Terrazzo tiles are very versatile and are available in a variety of colours and sizes. We offer endless design possibilities, allowing you to create a truly customized outdoor space that reflects your unique style and personality. Whether you're looking to create a sleek and modern outdoor oasis or a rustic and natural retreat, Alfresco Terrazzo tiles are the perfect choice for your next outdoor design project.



Base: Black

Chips: T2 Black, T2 Snow White

☪ Snow White ● Black





Base: Jaisalmer Yellow

Chips: T2 Jaisalmer Yellow

 Jaisalmer Yellow



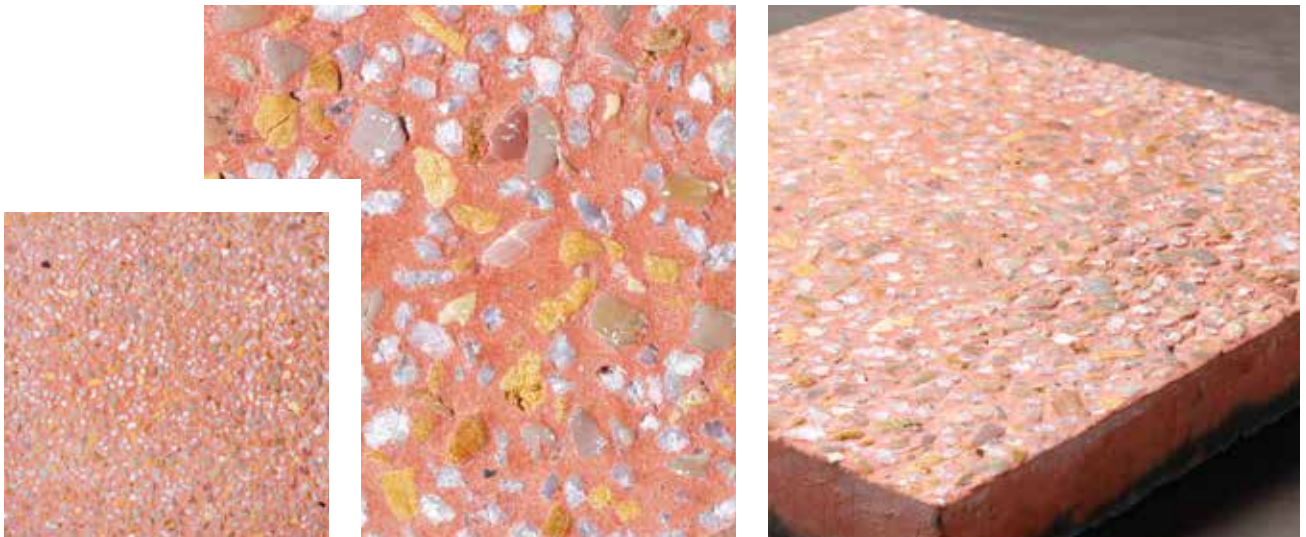


Base: Silver Grey

Chips: T2 Snow White, T2 Jaisalmer Yellow

☁ Snow White 🟡 Jaisalmer Yellow

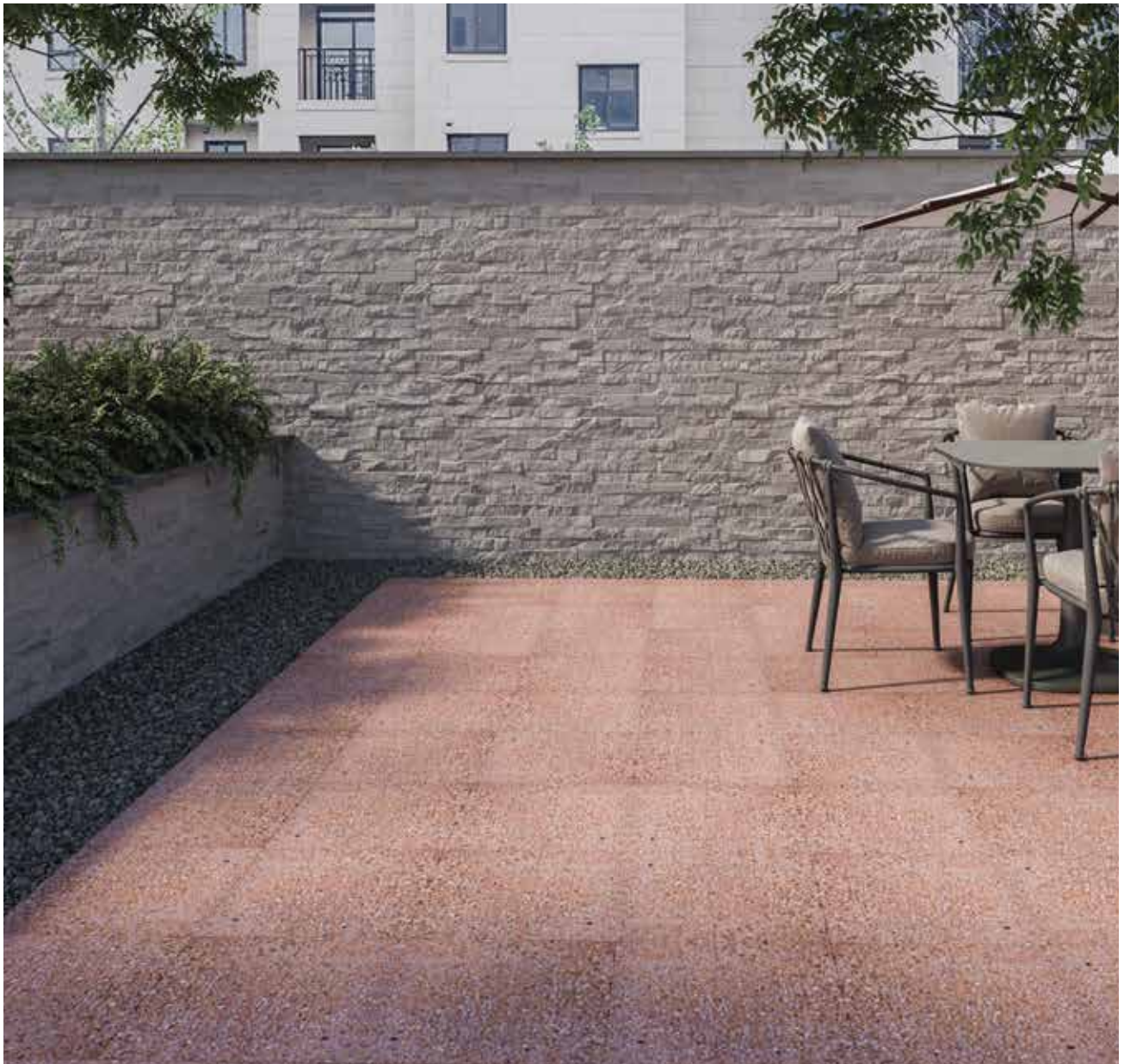


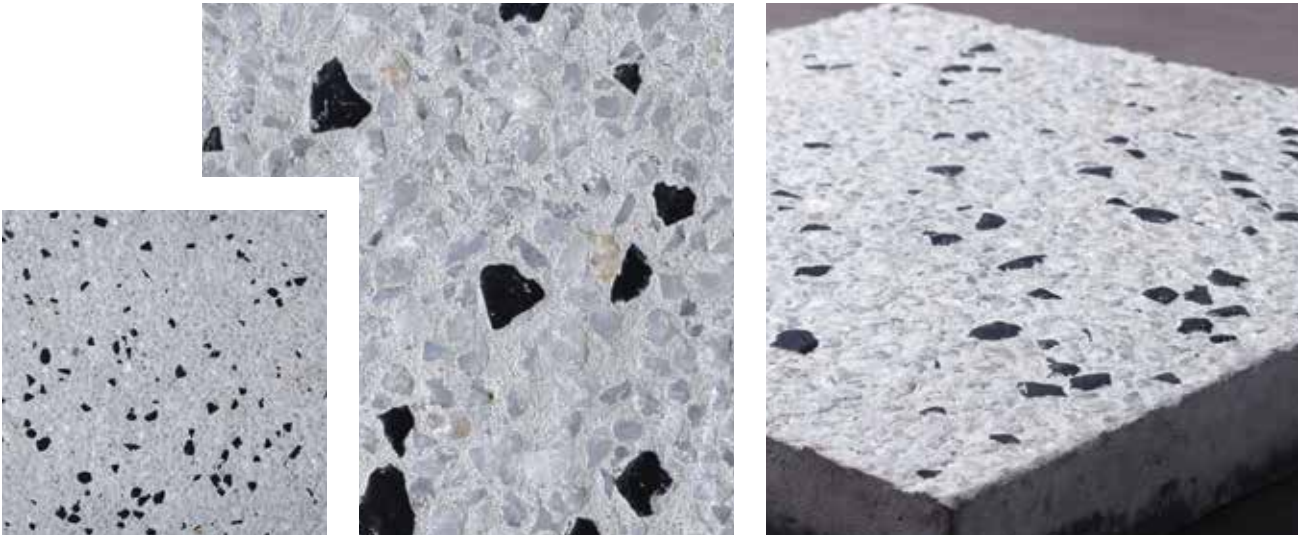


Base: Peach

Chips: T2 Jaisalmer Yellow, T2 Snow White, T2 Peach

 Jaisalmer Yellow  Snow White  Peach





Base: Light Silver Grey

Chips: T2 Snow White, T2 Black

☁ Snow White ● Black





Base: Fawn

Chips: T2 Snow White

☁ Snow White





Base: Silcilia

Chips: T2 Snow white, T2 Peach, T2 Black

 Snow White
  Peach
  Black



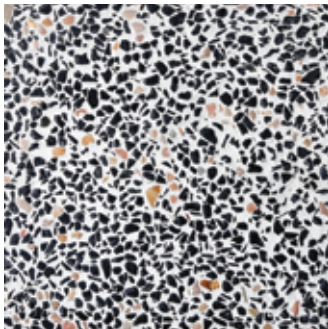


Base: Mushroom

Chips: T2 Jaisalmer Yellow, T2 Peach

 Jaisalmer Yellow  Peach





Base: Light Silver Grey

Chips: T2 Black, T2 Peach

Black Peach



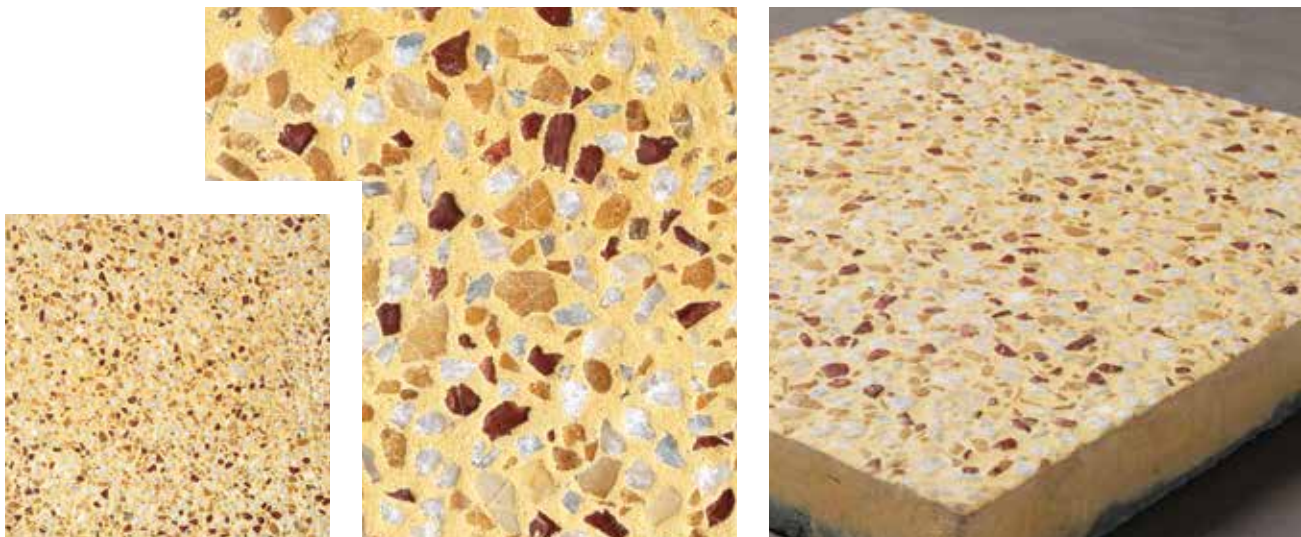


Base: Grey

Chips: T2 Snow White

☁ Snow White





Base: Buttercup Yellow

Chips: T2 Jaisalmer Yellow, T2 Snow White, T2 Red

 Jaisalmer Yellow  Snow White  Red





ALFRESCO TERRAZZO

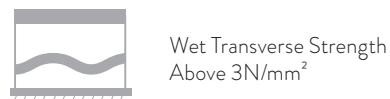
CONFORMING TO IS 1237

TECHNICAL COMPOSITION

Topping White cement, pigment, filler, marble, stone and glass chips

Backing Grey cement, Stone Grit/Dust

	Topping Layer - 8mm to 10mm
	Backing Layer - 13mm to 15mm



Wet Transverse Strength
Above 3N/mm²



Abrasion Test
Below 3.00mm



Water Absorption
Below 10%



Standard Size
20cm x 20cm
40cm x 40cm
1ft x 1ft
Max size 2ft x 2 ft only on request



Thickness
25mm for 20 x 20cm
28mm for 40 x 40cm

COLOUR CHART

These are the base colours recommended for Alfresco Terrazzo, which you viewed in the images above. Cement colour shades will be slightly different from printed colours. Though we use the finest ingredients and blend these with utmost care, variations in the shades of raw material can lead to variations between batches. These are the hallmark and charm of handcrafted products.





A CENTURY OF MAKING ARTISANAL TILES

With a reputation dating back for 100 years, Bharat Floorings & Tiles is considered a leader in custom-made cement floorings. Customers have trusted the brand's superior quality and welcomed the company into their daily lives, creating invaluable memories for generations of office and homeowners. Our commitment to handmade has created bespoke and unique products that can serve as cherished family heirlooms for years to come. Our cement tiles are made by hand, one at a time, using mineral pigments. After the tile is casted by the artisan, it is cured in water for a period of time, and then air dried before being shipped.



To create your story, drop into our showroom or visit us online.

We have showrooms located in Mumbai | Delhi | Ahmedabad
| Vadodara | Goa | Bengaluru | Hyderabad | Pune

Bharat Floorings & Tiles (Mumbai) Pvt Ltd.

32, Mumbai Samachar Marg, Next To BSE, Fort, Mumbai 400023

T: +91 22 40574400/23/44 | E: info@bharatfloorings.com

W: www.bharatfloorings.com | bharatfloorings | f BharatFloors

ISO 9001: 2015 Certified Company | Brochure Date: June, 2024

